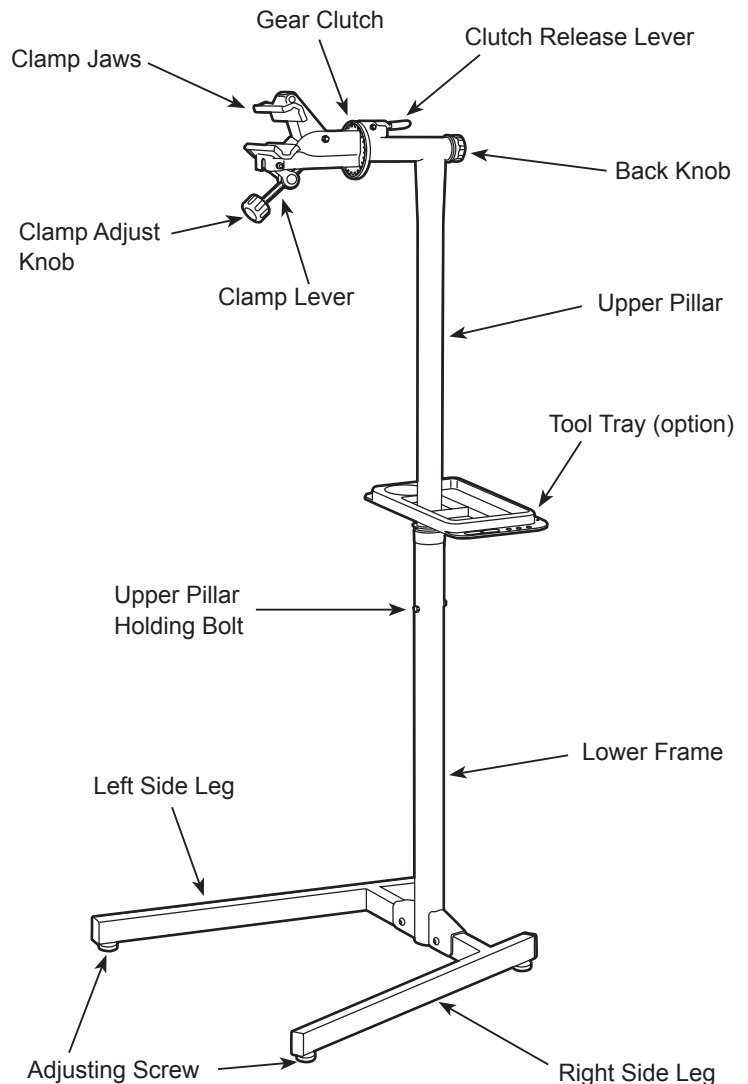


## Important Notes

## Parts Name

- Only for standard 2-wheel bicycle.  
Using with a tandem or long-tail bike may lose balance due to its length.  
Be careful on your back when lifting up heavy e-bike or DH bike to the clamp jaws of W-3100.
- Setup the W-3100 on a level floor for greater stability.
- Clamp the bike firmly to make sure it doesn't accidentally come loose.  
However, be careful not to crush the thin tubing or carbon frame due to too much clamping power.
- The clamp jaws will open/close via the clamp lever operation.  
Forcing the lever could cause damage to the lever, linkage, or your bike frame. Hold the bike by rotating the yellow knob on the lever.
- When turning the bike on W-3100, hold the bike with your hand then operate.  
Keep the bike relatively horizontal in the stand.  
Extreme angles may cause the bike or stand to fall.



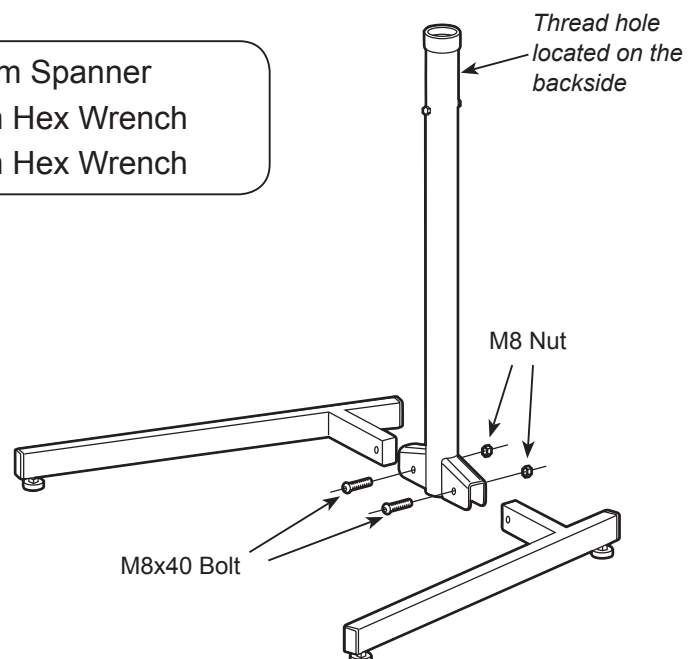
## How To Assemble W-3100

**Required Tools:** 1 x 13mm Spanner  
1 x 6mm Hex Wrench  
1 x 5mm Hex Wrench

**1**

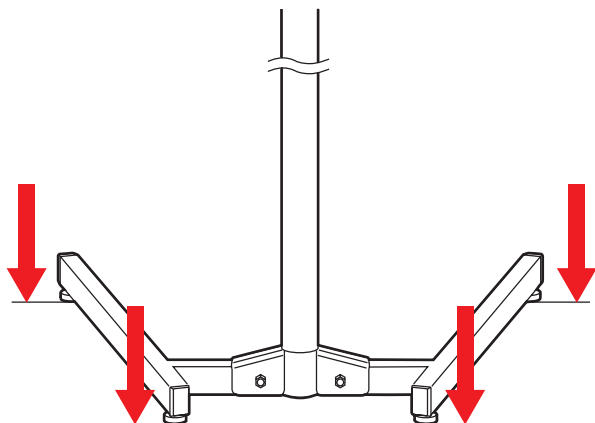
Assemble both Legs to the Lower Frame with the supplied M8x40 bolts and M8 Nuts.

Make sure the Lower Frame direction is that the thread hole for the Lock Bolt (P-8) is located on the back side.

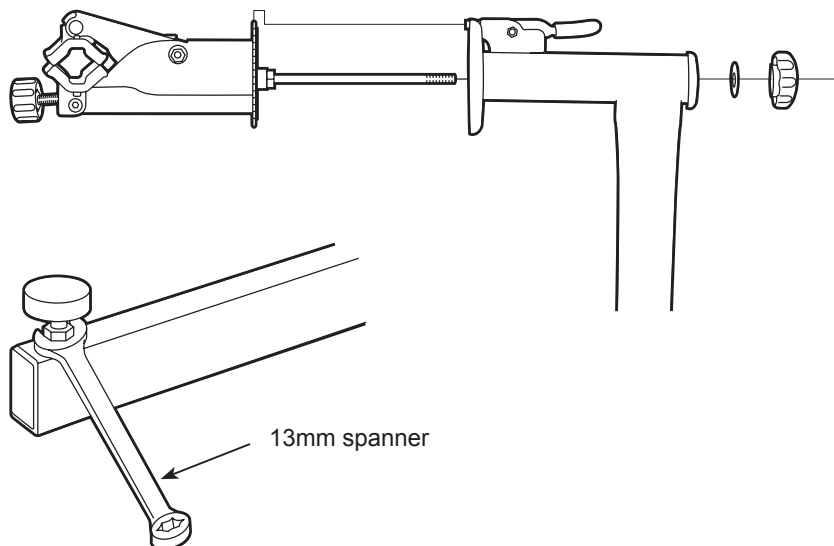


**2**

Place the assembled Lower Frame on the floor, and check if it sits stable as every Adjusting Screw is touching the floor perfectly. If not, adjust the length of the Adjusting Screw then tighten the lock nut firmly by a 13mm spanner. This is very important to keep enough stability while your bike is on the stand.

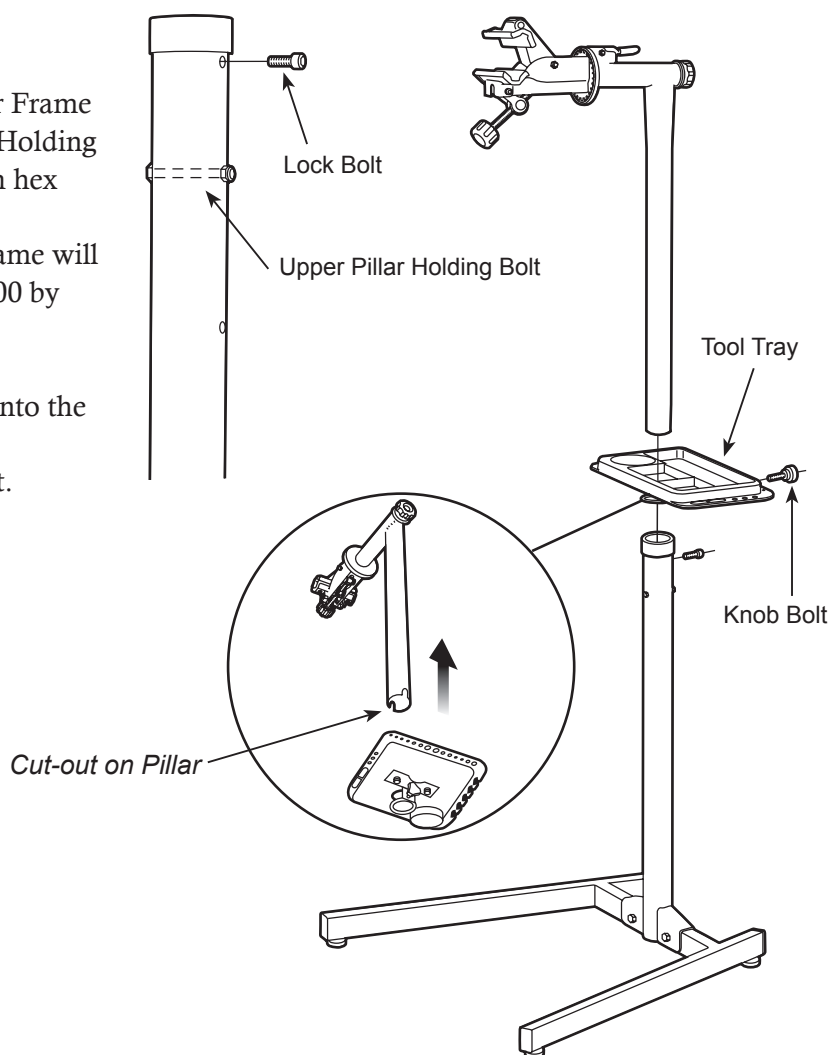
**3**

Assemble the clamp jaw unit to the Upper Pillar. Put the Clamp Shaft through the hole and hold it with the Back Knob and a flat washer. The knob should be tightened as firmly as possible until the clamp jaws rotates smoothly.

**4**

Insert the assembled Upper Pillar into the Lower Frame until the bottom cut-outs catch the Upper Pillar Holding Bolt, then tighten the Lock Bolt firmly by a 5mm hex wrench. If you don't tighten the Lock Bolt, the Upper Frame will be removed suddenly when you lift up the W-3100 by grabbing the Upper Frame.

To install the optional Tool Tray, insert the tray into the Upper Frame *BEFORE* connecting the frames. Fix the position, then tighten the small knob bolt.

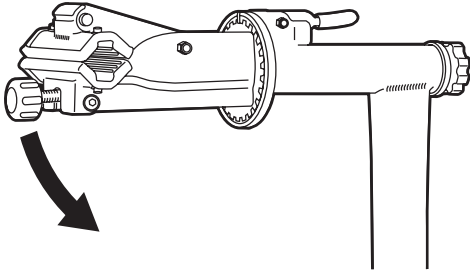


## How To Clamp Your Bike

Maximum Load Capacity: 40 kgs / 90 lbs

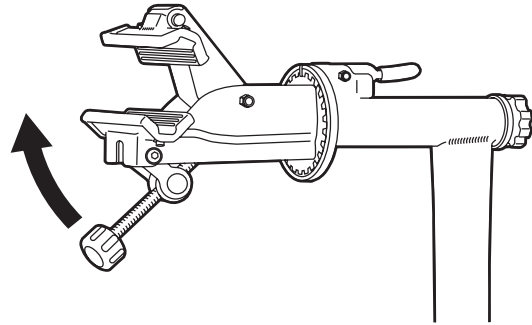
- 1** Pull down the Clamp Lever to open the jaws.

The following style is you will clamp the top-tube of bike.  
If you wish to clamp the seat-post, change the clamp angle before operation.

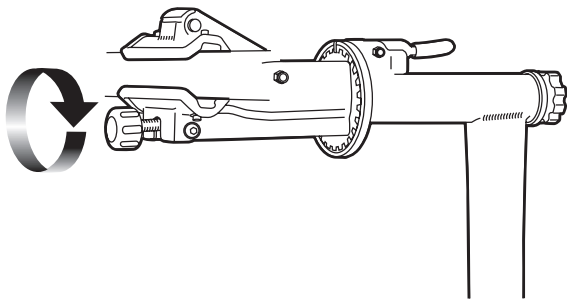


- 2** Place the top-tube on the lower jaw, then fully pull up the Clamp Lever to close the upper jaw.

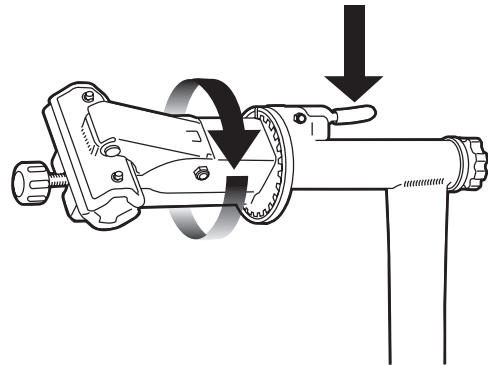
If the lever cannot be fully pulled up, turn the yellow Clamp Adjust Knob counter-clockwise until you can fully pull up the lever.



- 3** Turn the yellow knob clockwise to close the jaws for securely holding the bike.  
Do not try to clamp the bike frame by just pulling up the lever. The lever may be bent.



- 4** To rotate the clamp to get ideal bike angle, while pushing down the Clutch Release Lever, rotate the jaws.  
Release your finger after confirming the ratch is securely engaged to the gear.



## About Warranty Program

You are covered under our warranty program for 1 year from the date of your purchase. Any defects caused by the manufacturer's mistake will be solved with this program at manufacturer's expense, but any problem caused by the user's misuse or natural worn will not be supported by this program.

Minoura does not owe any responsibility to any extra troubles these problems may bring. For more detail, refer the enclosed "MINOURA LIMITED WARRANTY POLICY" card in the package. To get the latest information, you should regularly checkout Minoura web site.

## Contact Information

### MINOURA North America (for U.S. residents only)

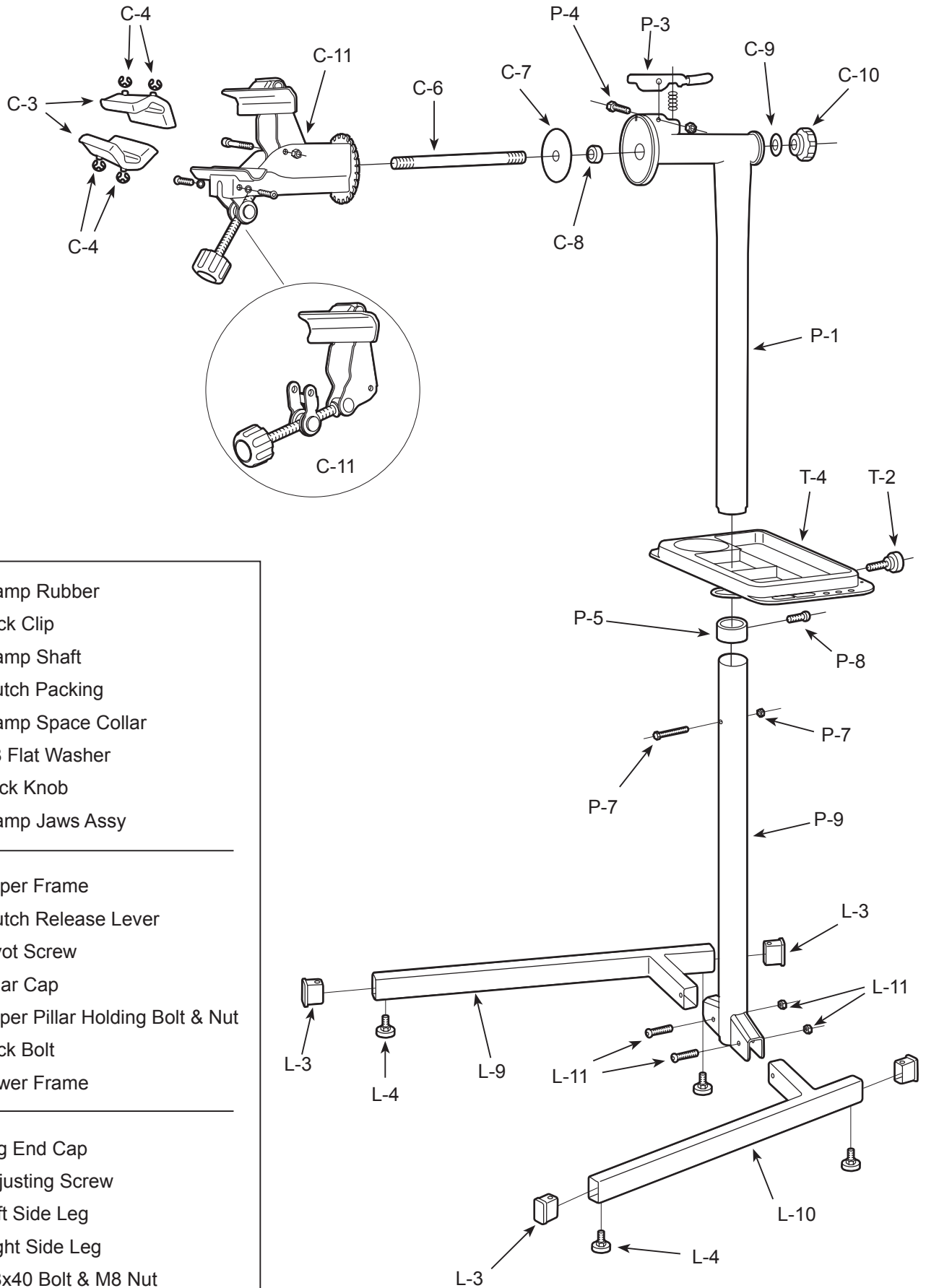
Hayward, California, U.S.A.  
Phone: 1-510-538-8599  
Fax: 1-510-538-5899  
support@minourausa.com

### MINOURA Japan Headquarters (for all other customers)

1197-1 Godo, Anpachi, Gifu 503-2305 Japan  
Phone: 81-584-27-3131  
Fax: 81-584-27-7505  
minoura@minoura.jp / www.minoura.jp

Made in Japan

# W-3100 Schematics



- C-3: Clamp Rubber
- C-4: Lock Clip
- C-6: Clamp Shaft
- C-7: Clutch Packing
- C-8: Clamp Space Collar
- C-9: M8 Flat Washer
- C-10: Back Knob
- C-11: Clamp Jaws Assy

- P-1: Upper Frame
- P-3: Clutch Release Lever
- P-4: Pivot Screw
- P-5: Pillar Cap
- P-7: Upper Pillar Holding Bolt & Nut
- P-8: Lock Bolt
- P-9: Lower Frame

- L-3: Leg End Cap
- L-4: Adjusting Screw
- L-9: Left Side Leg
- L-10: Right Side Leg
- L-11: M8x40 Bolt & M8 Nut

- T-2: Tray Fixing Knob Bolt
- T-4: Tool Tray