

< Warranty >

- (1) Minoura shall provide **1 year limited warranty** to product from date of your purchase. Keep your receipt for warranty/verification. Minoura may ask you to present it should require service during the warranty period.
- (2) Minoura shall provide free repair or free replacement service if it has been determined there was a defect during the manufacturing process.
- (3) The warranty will be void if damage is determined to be caused by abuse, over-tightening of the bolt or unauthorized modification.
- (4) Use of this product at your own risk. Minoura will not be responsible for any issues caused by dropping, breakage, theft or other, on both the product and your phone.
- (5) Check that all the bolts and EB-BAND device are properly tightened every time before use.
- (6) The wings provide shock absorption but cannot protect your phone from all damage. Minoura is not responsible for your phone loosening in the holder due to vibrations.
- (7) We strongly suggest you that you remove the holder when you are away from your bike.
- (8) Natural wear will not be covered by this warranty. Order the necessary replacement parts from the shop you purchased this product.
- (9) Be sure to acknowledge and accept the above conditions once you open the package and start using the product.
- (10) For more detailed and the latest information about "Minoura warranty" please check our website (www.minoura.jp)
- (11) The product may subject to change without any prior notice.

< Caution >

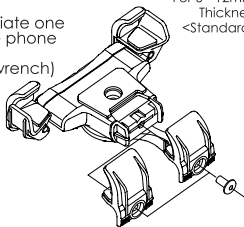
- (1) Do not keep watching the phone screen and use calling function while you are riding on the road. It's prohibited by law.
- (2) Check that every part shown in the figure on the left are included. If there are any missing parts, do not use the product and contact the place of purchase immediately.
- (3) You need to change the slide wing position and the center wing size depending on the thickness of your phone. Wrong combinations may not hold the phone correctly and may cause unexpectedly release.
- (4) A strong shock may cause the phone to be released from the holder. Use the supplied Silicon Bands to hold the phone securely to the holder.
- (5) The most materials are fragile plastic and light alloy. Do not try to over-tighten the bolt, otherwise the thread will have broken.

Adjusting Process To Fit Your Smart Phone

Selecting Center Wing

There are two sizes on the Center Wing.
Install the appropriate one depending on the phone thickness.
(use a 3mm hex wrench)

Center Wing (Small) For 6 - 12mm Thickness <Standard>
Center Wing (Large) For 12 - 18mm Thickness



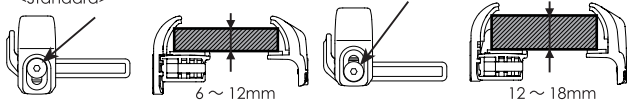
!
If you only need to change the Side Wing Height, loosen the bolt slightly. However if you need to change the Side Base position too you'll need to remove the bolt completely.

Side Wing Height

The SideWing can be positioned at two different heights. Set at the appropriate position for your phone thickness.
(use a 3mm hex wrench)

Bolt comes upper position <Standard>

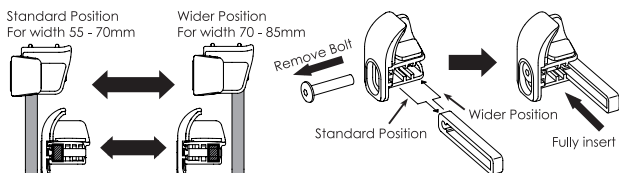
Bolt comes lower position



Adjusting Width (Replacing Slide Base)

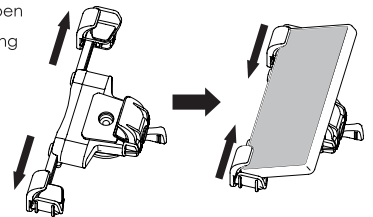
If your phone width is 70mm or more, you need to change the insertion point of the Sliding Arm to widen the holder.

Remove the Adjusting Bolt completely, and change the insertion point of the Sliding Arm, then fix it by tightening the bolt again.

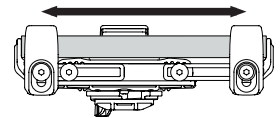


Adjusting Length (Moving Sliding Arm)

Loosen the Adjusting Bolt, fully open both Sliding Arms, and adjust the arms, then fix position by tightening the bolts.



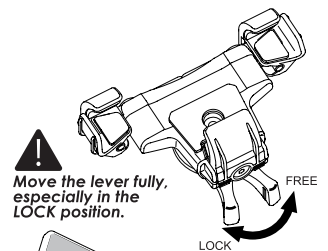
While applying both Side Based to the phone, move it back and forth every switch escapes from the Center Wing, then tighten the bolts to fix the position.



Installing Your Smartphone

< Lock Lever >

Set the Lock Lever at FREE position, the Slide can move freely.
Set at LOCK position, the Slide will be securely locked in this position.
Be sure to chose the lever all the way.

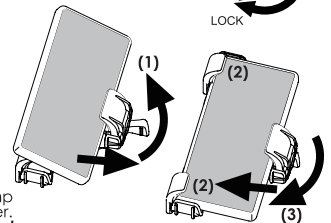


< Installing The Phone >

(1) Move the Lock Lever in the FREE direction.

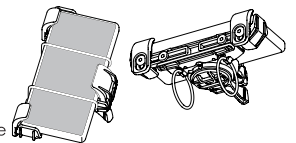
The Slide can now be moved by pulling it. When you release your hand, the Slide will go back automatically due to the inside spring.

- (2) Set the phone between the Side Wings as deeply as possible while supporting the Slide by your hand.
- (3) Slowly move back the Slide to clamp the phone using the spring's power.
- (!!) Do NOT suddenly release your hand from the Slide, it will run so quickly that the plastic parts could be damaged when hitting hard.**
- (4) Fully move the Lock Lever to the LOCK position to seture the Slide.



Using Silicon Band

In order to prevent losing the phone while riding should the locking mechanism release unexpectedly, we strongly suggest you use the supplied Silicon Bands. The band is set in the hook on the backside of the holder.



Check it out /



You need to watch "How to assemble EB-2235" video. We do not have instruction about this item. Please scan the QR-code to see!