

STEP BY STEP FIRMWARE UPDATES INSTRUCTIONS

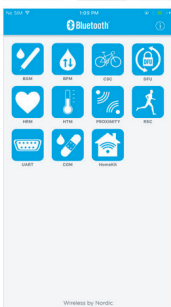
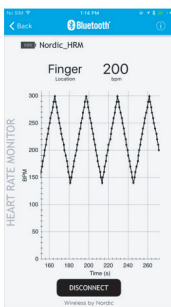
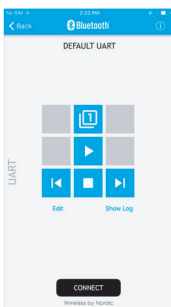
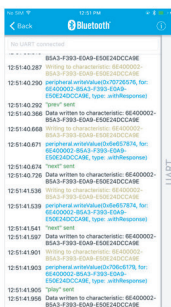
1. DOWNLOAD and INSTALL nRF Toolbox from App Store / Google Play.

App Store > Utilities > Nordic Semiconductor ASA

nRF Toolbox 17+
Nordic Semiconductor ASA >

Details Ratings and Reviews Related

Screenshots **iPhone** iPad

Get

This app is designed for both iPhone and iPad

Rating: 17+

LINKS
Privacy Policy

© Nordic Semiconductor ASA


Description

The nRF Toolbox works with a wide range of the most popular Bluetooth Low Energy accessories. It contains applications demonstrating BLE profiles: Cycling Speed and Cadence; Running Speed and Cadence; Heart Rate Monitor; Blood Pressure Monitor; Health Thermometer Monitor; Glucose Monitor Monitor.

The Device Firmware Update (DFU) profile, that is also included, allows one to upload the application image over-the-air (OTA). It is compatible with Nordic Semiconductor nRF5x devices that have the Soft DFU Bootloader installed...

2. DOWNLOAD the FIRMWARE update from the MINOURA website.

Done nrf51422_Minoura_enc.zip




nrf51422_...oura_enc.zip

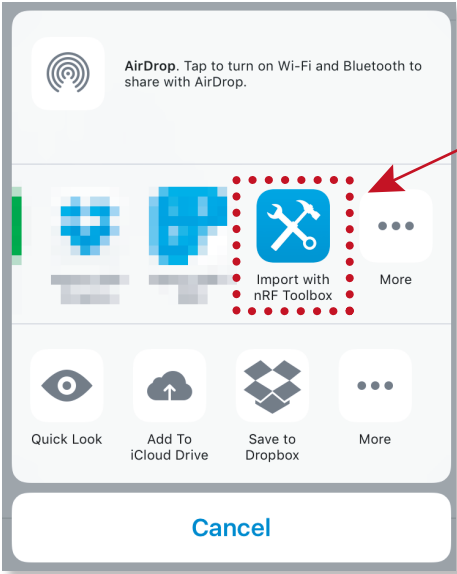
34 KB

2 files

[Preview Content](#)

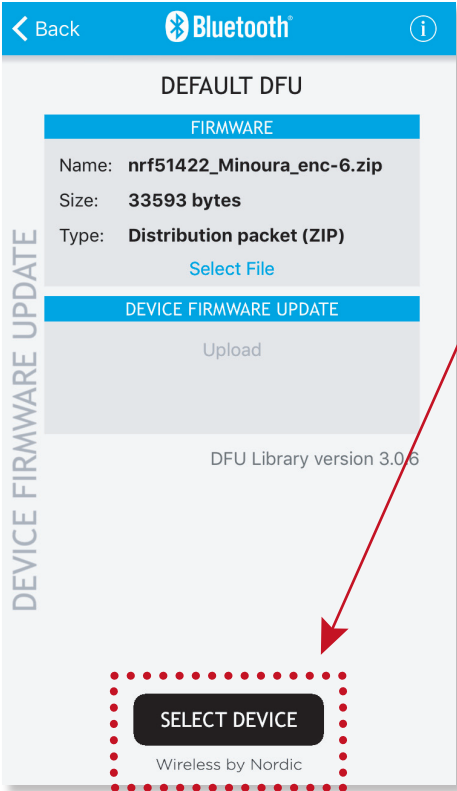


STEP BY STEP FIRMWARE UPDATES INSTRUCTIONS

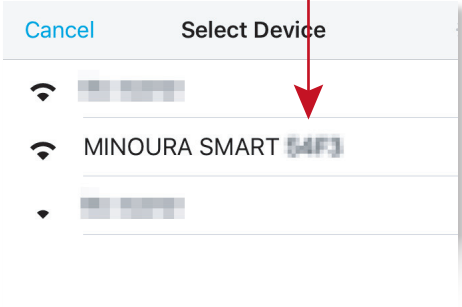


3. Click "OPEN FROM OTHER PROGRAM" and select "COPY TO nRF Toolbox".

4. Display nRF Toolbox, Click "SELECT DEVICE".



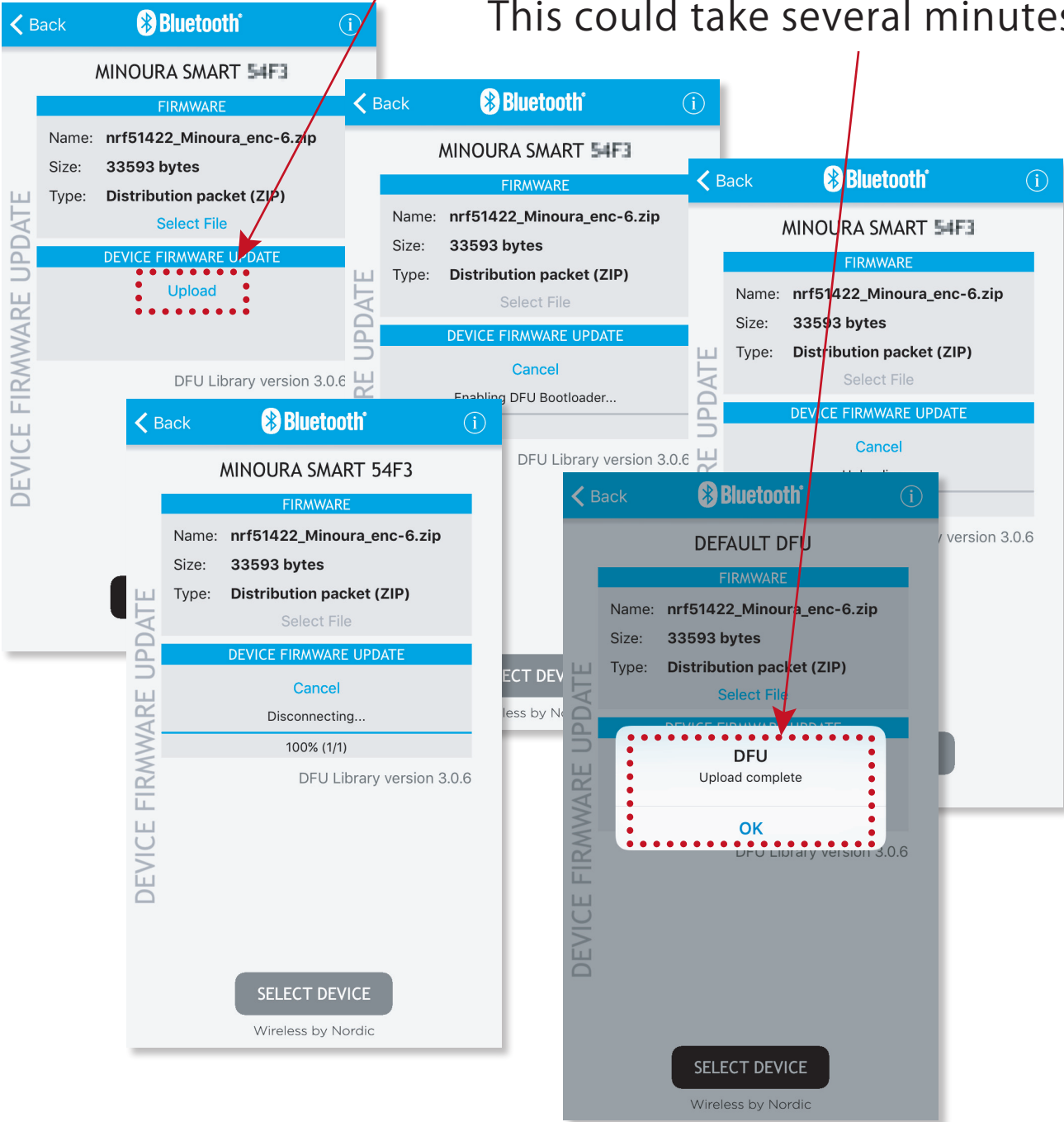
5. Then select "MINOURA SMART XXXX".



STEP BY STEP FIRMWARE UPDATES INSTRUCTIONS

6. Go back to nRF Toolbox and click "UPLOAD".

Allow the update to finish.
This could take several minutes.



! DO NOT REMOVE POWER PLUG UNTIL UPDATE IS FULLY FINISHED.

STEP BY STEP FIRMWARE UPDATES INSTRUCTIONS



7. Confirm RED led is on and BLUE led is flashing after updates new FIRMWARE.

8. Pair again with ANT+ or BLE.