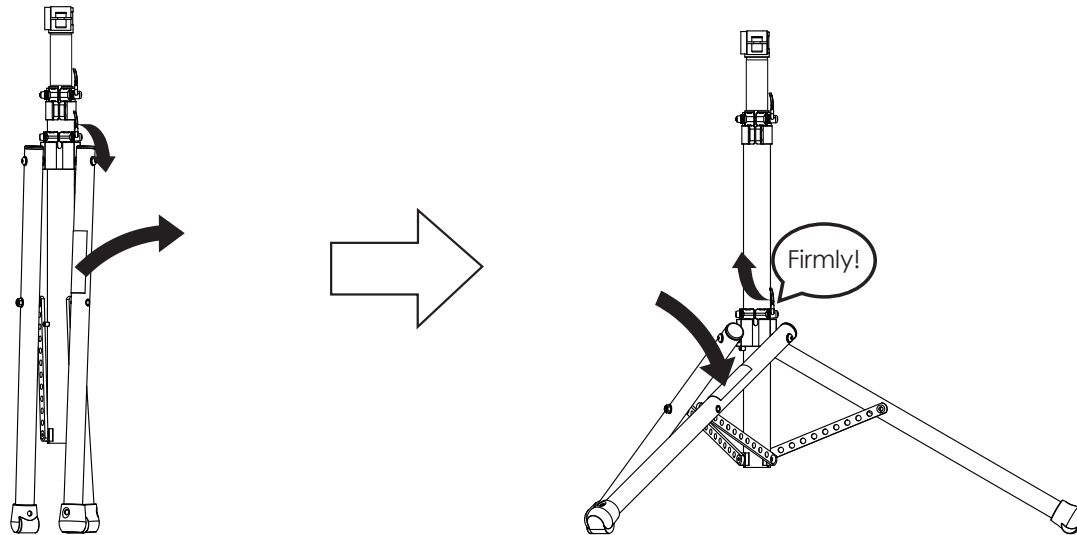


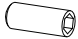
### Setting up your Field Unit


1. Remove all parts of the Field Unit from the box.
2. Set the Field Unit in an upright position and unfold the Tripod Legs by loosening the Lower Quick Release (QR) Lever on the Lower Clamping Collar and coaxing the Legs outward. Tighten the Lower QR lever. Firmly!

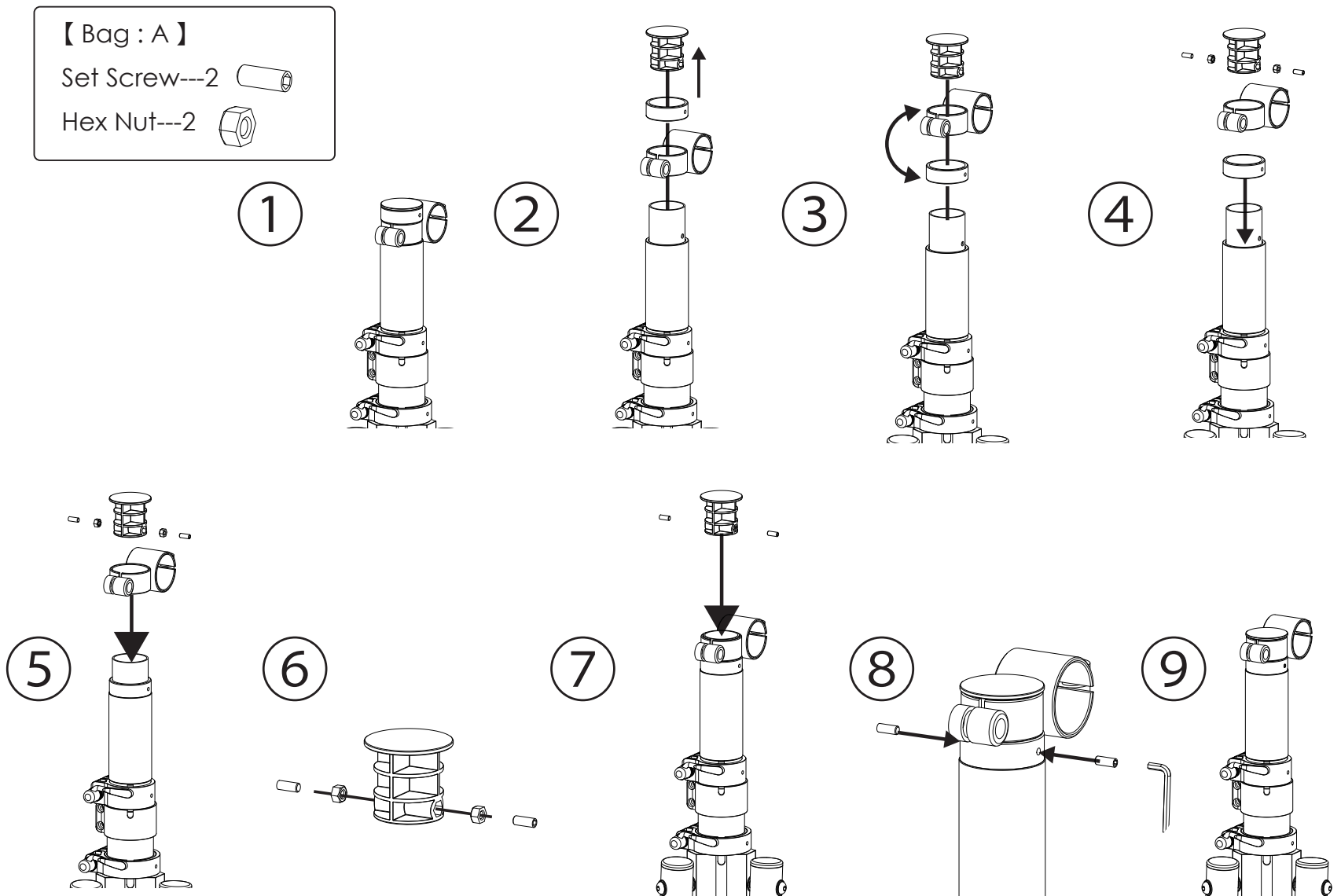


3. The upper Telescoping Tube will have an aftermarket pvc pipe Protective Sleeve covering it. Please leave the sleeve in place for the duration of the unit' s life. Its purpose is to prevent the Telescoping Tube from inadvertently slamming into the Lower End Plug (not visible, located inside lower Main Tube) with enough force to crack it, potentially causing a bottoming-out. This might also occur during shipping or during your field travels. That' s why we ask you to always keep it on.

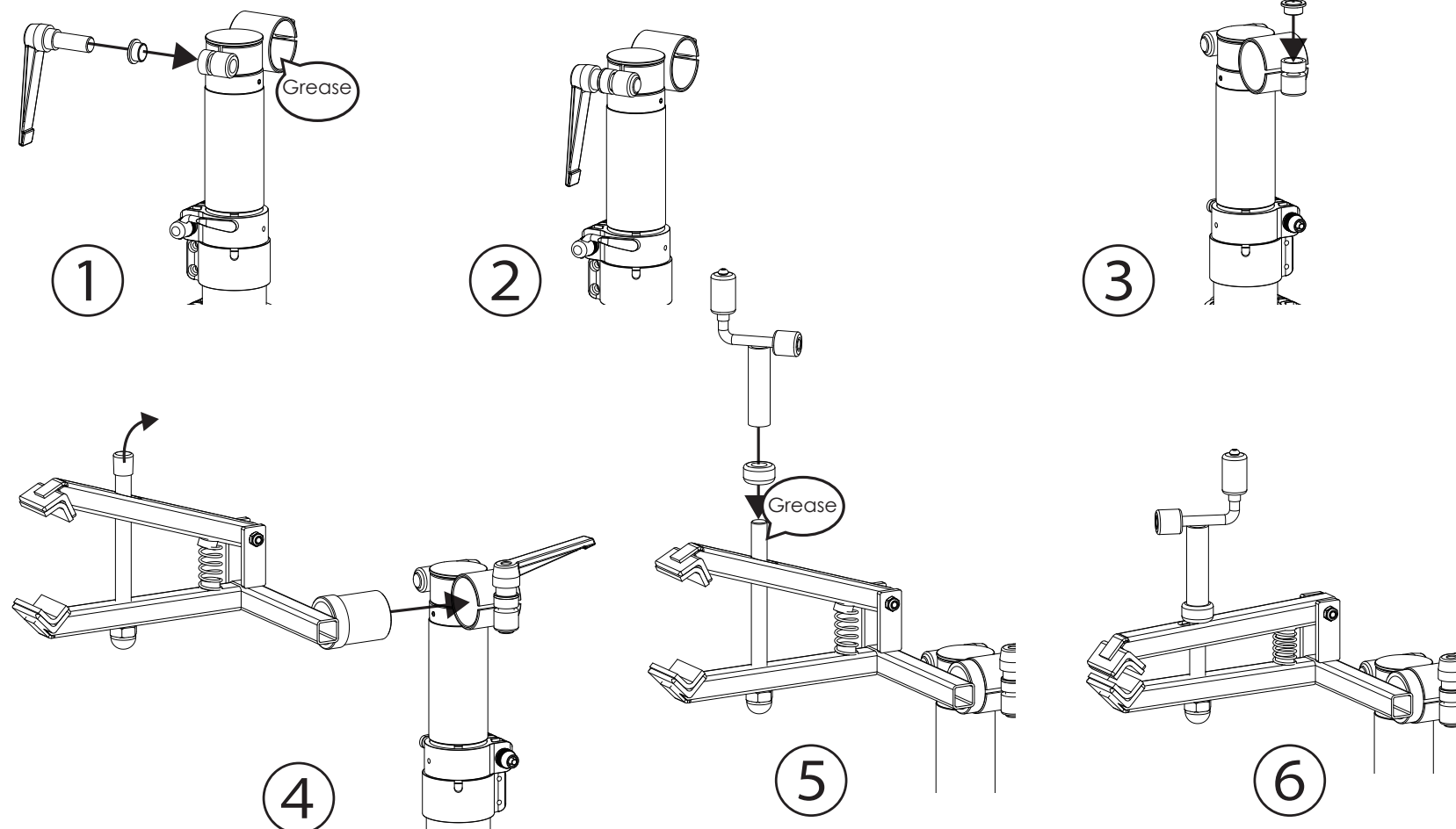
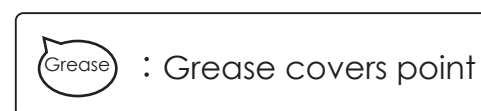
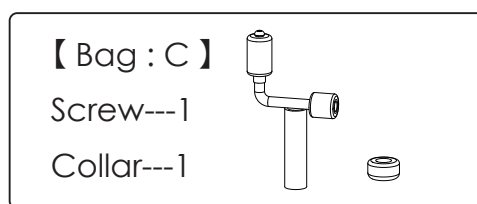
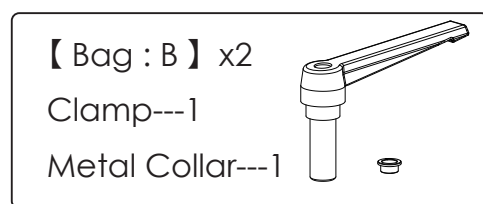
**【 Bag : A 】**

Set Screw---2 

Hex Nut---2 



4. Before inserting the Right Arm Clamp into its Receptacle, apply the provided, packaged (white) Grease to the inside of the Clamp Receptacle, and on the outside of the Clamp's rotating surface. Insert greased Right Arm Clamp into its Receptacle. "Clock" the position of the Right Arm at 12:00 with "offset" section up. Using the greased Indexable Locking Lever, moderately tighten the Right Arm Clamp on the Receptacle. Note: Once adequate rotational binding is achieved, the Indexable Locking Lever can be "clocked" to facilitate an ergonomically preferred "on-off" action.



5. Adjust the Right Arm Clamp's rotation by loosening the Indexable Locking Lever. Move to the desired position, then tighten the Locking lever firmly! We recommend this step only be done without a bicycle in the stand.

### Placing a bike on the Field Unit

1. Always ensure the chain is on the largest front chain-ring (if applicable) of the bicycle before loading onto the stand to prevent injury from exposed sprocket teeth!
2. Ensure Right Arm Clamp is open far enough to accept seat post 7-10 turns from closed is adequate for most round seat posts.
3. Lift the bike into position and place the seat post into the Leathers of the Jaws of Clamp, then tighten Crank Handle several turns quickly to firm Contact- Plus 1/2 Turn maximum.
4. Note : The Tripod Leg with Safety Grip Tape can be positioned slightly under the front of the bike so that you can put your foot on that area while supporting the downtube of the bike with your knee/lower thigh while clamping the bike firmly into stand.



### SPECIFICATIONS

CLAMP HEIGHT	50 - 66" (1270-1676mm)
OPEN FOOTPRINT	62" (1575mm) Diameter
COLLAPSED SIZE	7x7x47" (175x175x1194)
WEIGHT	20.4lbs (9.25kg)
CAPACITY	79lbs (36kg)